

# BEAUTIFUL

from Christina Aguilera's STRIPPED

Words and Music by  
LINDA PERRY

Gentle Ballad ( $\text{♩} = 78$ )

Chord diagrams: Eb, Eb7/D $\flat$ , Cm7, Abm6/C $\flat$

Chord diagrams: Eb, Eb7/D $\flat$ , Cm7, Abm6/C $\flat$

Chord diagrams: Eb, Eb7/D $\flat$ , Cm7

Ev-'ry-day \_\_\_\_\_ is so won - der-ful, \_\_\_\_\_ then sud-den - ly, \_\_\_\_\_ it's hard to breathe. \_

Chord diagrams: Abm6/C $\flat$ , Eb, Eb7/D $\flat$

Now and then \_\_\_\_\_ I get in - se-cure, \_\_\_\_\_ from all the pain, \_





I'm so a - shamed. . . . . I am beau - ti - ful \_ no  
 You are beau - ti - ful \_ no





mat - ter what \_ they say \_ . . . . . Words can't bring me \_ down \_  
 mat - ter what \_ they say \_ . . . . . Words can't bring you \_ down \_





I am beau - ti - ful \_ in ev - 'ry sin - gle way \_ . . . . . Yes words can't bring me \_ down \_  
 'Cause you are beau - ti - ful \_ in ev - 'ry sin - gle way \_ . . . . . Yes words can't bring you \_ down \_





So don't you bring me down \_ to - day.  
 So don't you bring me down \_ to - day.

*To Coda* 

Chord diagrams: **E $\flat$ /D $\flat$** , **Cm7**, **A $\flat$ m6/C $\flat$**

Musical notation for the first system, including guitar chord diagrams and piano accompaniment.

Chord diagrams: **E $\flat$** , **E $\flat$ 7/D $\flat$** , **Cm7**

To all your friends \_\_\_\_\_ you're de - lir - i-ous      So con - sumed \_\_\_\_\_ in all your \_\_\_\_\_

Musical notation for the second system, including guitar chord diagrams and piano accompaniment.

Chord diagrams: **A $\flat$ m6/C $\flat$** , **E $\flat$**

\_\_\_\_\_ doom \_\_\_\_\_      Try - ing hard \_\_\_\_\_ to fill the \_\_\_\_\_

Musical notation for the third system, including guitar chord diagrams and piano accompaniment.

Chord diagrams: **E $\flat$ 7/D $\flat$** , **Cm7**, **A $\flat$ m6/C $\flat$**

emp - ti-ness, \_ the picc-es gone, \_\_\_\_\_ Left the puz-zle un - done, \_ is that the way it is. \_\_\_\_\_

*D.S.  $\text{Coda}$  al Coda*

Musical notation for the fourth system, including guitar chord diagrams and piano accompaniment.



*Coda*  

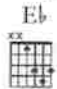




No mat - ter what we do, \_\_\_\_\_ No mat - ter what we say, \_\_\_\_\_



mat - ter what we say \_\_\_\_\_ Yeah \_\_\_\_\_ Oh, \_\_\_\_\_  
 We're the song in - side the tune, \_\_\_\_\_ full of beau - ti - ful mis - takes



And ev - 'ry - where we go, \_\_\_\_\_ the sun will al - ways shine.



the Sun will al - ways al - ways shine. \_\_\_\_\_  
 And to - mor - row we might a - wake \_\_\_\_\_ on the oth - er side.

A $\flat$ 
Fm7
E $\flat$ 
E $\flat$ /D $\flat$

'Cause we are beau-ti-ful — no mat-ter what . they say . Yes words won't bring us — down, —

Cm7
A $\flat$ 
Fm7

We are beau-ti-ful — in ev-'ry sin - gle way . Yes

E $\flat$ 
E $\flat$ /D $\flat$ 
Cm7
Fm7

words can't bring us down — So don't you bring me down — to-

E $\flat$ 
E $\flat$ 7/D $\flat$ 
Cm7
A $\flat$ m6/C $\flat$

day. Don't you bring me down . to -

6

E $\flat$



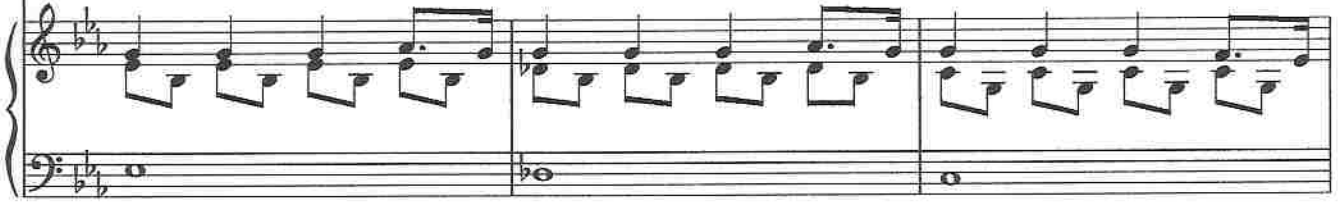
E $\flat$ 7/D $\flat$



Cm7



day.



A $\flat$ m6/C $\flat$



Don't you bring me down - mm - hmm to - day.

E $\flat$

