

# ALWAYS ON YOUR SIDE

Words and Music by  
SHERYL CROW

Moderately slow  $\text{♩} = 76$

*Intro:*

\*B $\flat$ /F



F



B $\flat$ /F



F



Piano



<sup>1</sup> Chord figures suggested fingering

1. My

$\text{♩}$  Verses 1, 2, & 3:

B $\flat$ /F



F



B $\flat$ /F



F



Piano cont. solo

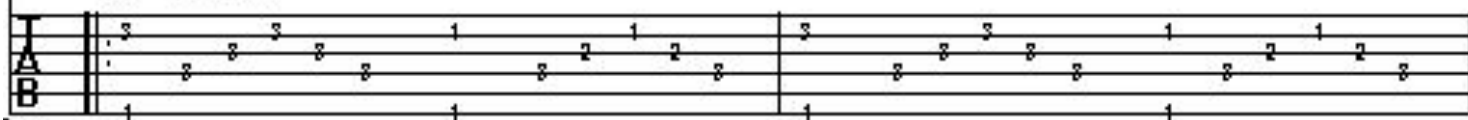


yes - ter - days . are all \_ boxed up \_ and neat - ly \_ put a - way . .  
23. See additional lyrics

\*Acous. Gtr. (nylon - string)



*mf* fingerstyle



<sup>1</sup> Acous. Gtr. uses Verse 2

Dm



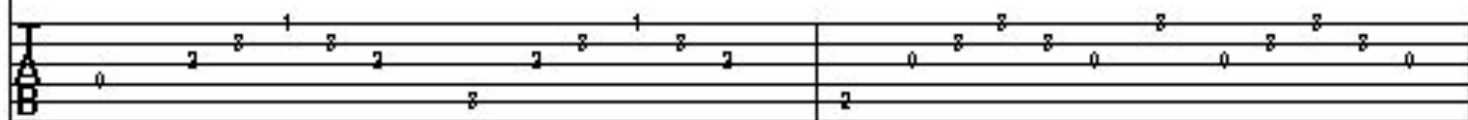
Dm/C

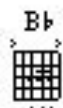


G/B

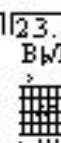
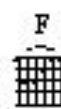
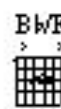
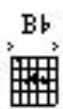
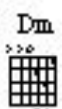
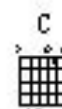
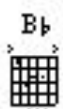
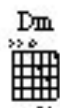


but ev - 'ry now and then you come to mind. \_

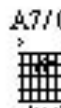
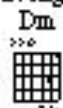




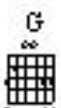
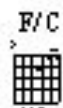
*Acous. Gtr. cont. simile*



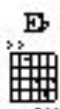
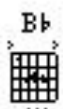
*Bridge:*



1. Well, is there some - place far - a - way, some - place where all is clear,  
 2. Well, is there some - place far - a - way, some - place where all is clear,



eas - y to start o - ver with the ones you hold so dear. Or  
 eas - y to start o - ver with the ones you hold so dear. Or



are you left to wan - der all a - lone e - ter - nal - ly? This is -  
 are we left to wan - der all a - lone e - ter - nal - ly? Well, is -

Gm F/A Bb F/A

- n't how\_ it's real - by meant\_ to be. \_\_\_\_\_ No, it  
 this how\_ it's real - by meant\_ to be? \_\_\_\_\_ No,

1. D.S.  $\frac{3}{4}$

Gm F/A Csus C

is - n't how\_ it's real - by meant\_ to be. \_\_\_\_\_ 3. Well, they say\_  
 is it how\_ it's real - by meant\_ to be? \_\_\_\_\_

Verse 4:

2. Csus C Bw/F F

Well\_ they say \_\_\_\_\_ that love is in\_ the air. \_\_\_\_\_

Bw/F F Dm Dm/C

New - er is it clear, \_ how to pull it close \_\_\_\_\_ and make it

G/B Bb F

stay. \_\_\_\_\_ If but - ter - flies are free to fly, \_\_\_\_\_ why

Dm G7 Bb C

do they fly a - way, \_\_\_\_\_ leav - ing me to car - ry on \_\_\_\_\_ and won - der why\_

Was it you that kept me wan - der - ing through this life, \_  
 when you know that I was al - ways on \_  
 your side. \_  
 your side. \_

Acous. Gtr.

*Verse 2:*

Everything was easy then,  
 So sweet and innocent,  
 But your demons and your angels reappeared,  
 Leaving only traces of the man you thought you'd be,  
 Leaving me no place left to go from here,  
 Leaving me so many questions all these years.  
 (To Bridge:)

*Verse 3:*

Well, they say that love is in the air,  
 Never is it clear,  
 How to pull it close and make it stay.  
 Butterflies are free to fly and so they fly away,  
 And I'm left to carry on and wonder why.  
 Even through it all, I'm always on your side.  
 (To Bridge:)